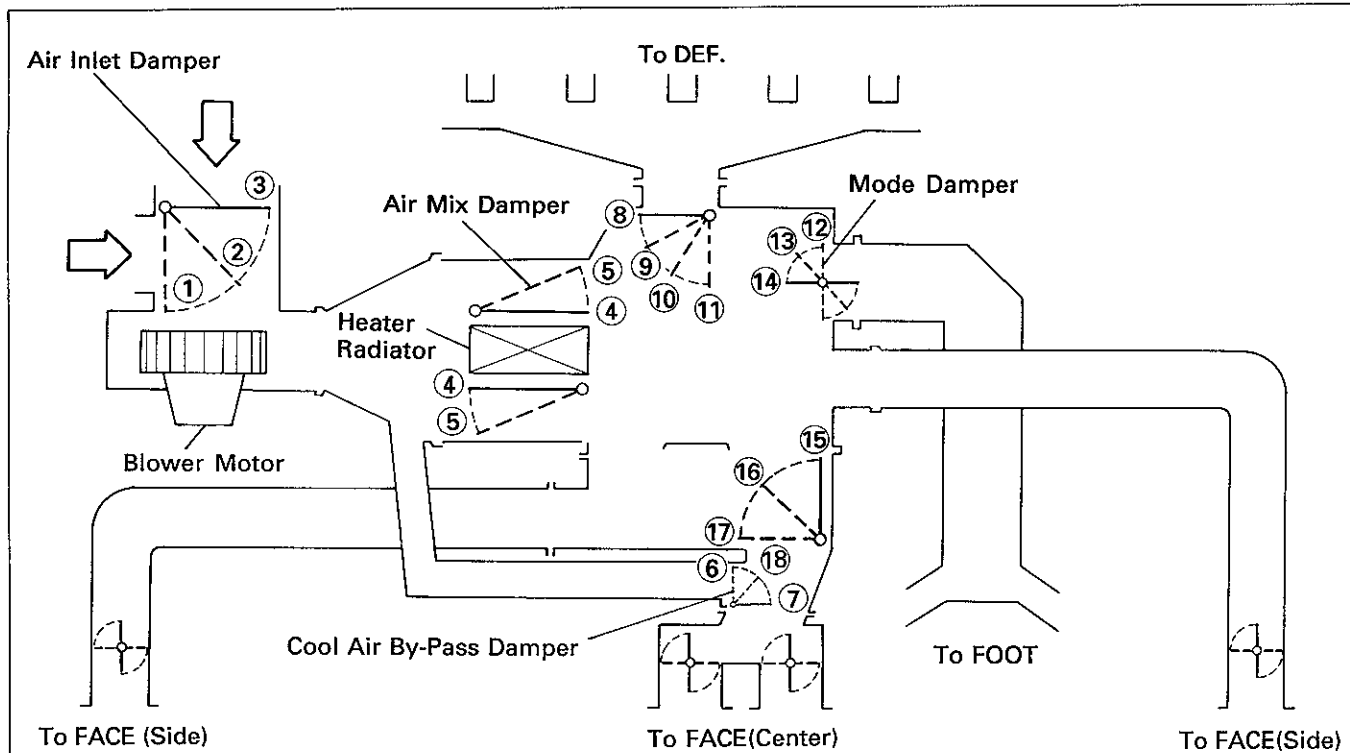


DAMPER POSITIONS



A/C control lever	A/C control lever position	Dampers position	Air flow vents			
			FACE		FOOT	DEF
			Center	Side		
Air Inlet Control Lever	Fresh	③	/	/	/	/
	■	②				
		①				
Temperature Control Lever	Warm	⑤	/	/	/	/
	Cool	④				
Mode Control Lever	Def.	⑪ ⑫ ⑬ ⑭	○	○		○
	Foot/Def.	⑩ ⑬ ⑭ ⑭	○	○	○	○
	Foot	⑨ ⑭ ⑬ ⑭	○	○	○	○
	Bi-Level	⑧ ⑬ ⑭ ⑭	○	○	○	
	Face	⑧ ⑫ ⑬ ⑭	○	○		

The size of circle (○) indicates the proportion of the air flow volume.